



55a Shakespeare Street, Southport, PR8 5AB

£625 PCM

Newly Refurbished One-Bedroom Flat – Shakespeare Street, Southport

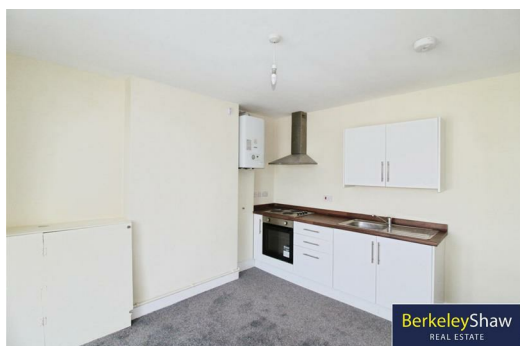
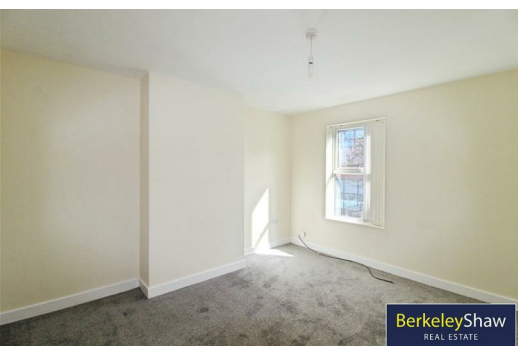
This beautifully presented one-bedroom flat, located on the popular Shakespeare Street in Southport, has been recently refurbished to a high standard and is ready for immediate occupancy.

The property offers a bright and spacious layout, featuring a generous lounge ideal for relaxing or entertaining. The modern kitchen/diner provides ample space for both cooking and dining, making it a practical and stylish heart of the home.

The flat boasts a well-proportioned double bedroom, offering comfortable living space, along with a contemporary bathroom fitted with a three-piece white suite and the added benefit of a separate shower cubicle.

Additional features include gas central heating throughout, ensuring warmth and efficiency all year round.

Ideally suited to professionals or couples, this attractive property is conveniently located close to local amenities and transport links.



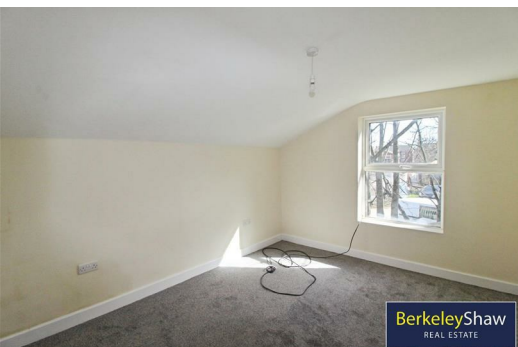
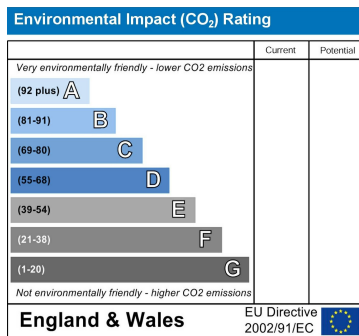
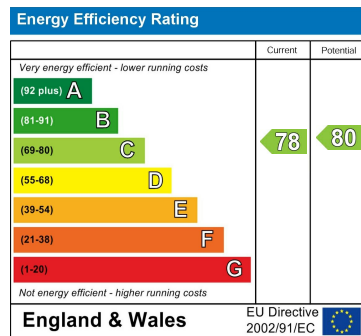
External

Lounge

Bedroom

Kitchen/diner

Bathroom



Berkeley Shaw Estate Agents Limited.
Company No. 0784754

Berkeley Shaw Real Estate Limited.
Company No. 05206927

